



Bal Bharati
PUBLIC SCHOOL
Sector-21, Noida, G.B. Nagar

Date: 19 Jan, 2022

CALENDAR-2022

Environment is no one's property to destroy; it's everyone's responsibility to protect.

Dear All,

Placing indigineous art forms at the heart of problems is the way to empathise and arrive at human-centric, inclusive and equitable solutions to challenges faced by the world. The SDGs as given by the United Nations, enshrine a conceptual shift in thinking about development beyond economic growth and envisioning a desirable future that is equitable, inclusive, peaceful, and environmentally sustainable. This bold vision demands creative approaches and we at Bal Bharati Noida have enthused our children to understand SDGs through various indigenous art forms.

This calendar is a beautiful compilation of the Art works of our children depicting their understanding of SDGs and possible solutions envisaged by them.

Asha Prabhakar
(Principal)

स्वच्छ भारत

एक कदम स्वच्छता की ओर

FOR FURTHER INFO, VISIT OUR FB PAGE www.facebook.com/balbharatinoida

www.twitter.com/BBPSNoida

www.instagram.com/balbharatiND

www.linkedin.com/in/asha-prabhakar-614a0153



<https://bbpsnoida.balbharati.org>

www.facebook.com/balbharatinoida

www.twitter.com/BBPSNoida

www.instagram.com/balbharatiND

www.linkedin.com/in/asha-prabhakar-614a0153

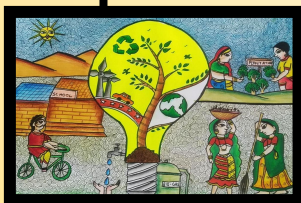


Bal Bharati
PUBLIC SCHOOL

Sector-21, Noida, G.B. Nagar



**LEAVE
NO ONE
BEHIND**



INDIGENOUS ART FORMS

- ☐ The NEP-2020 aims to create an education system that is more student centric.
- ☐ With a focus on positive creativity, our students have beautifully aligned the indigenous Art Forms with Sustainability.

'The future belongs to young minds with an education and the imagination to create'



JANUARY 2022

ZERO POVERTY

"Poverty is the only burden that is not lightened by sharing with others."



ARSH SHARMA (8 A)

ART FORM - KALAMKARI

Kalamkari or more specifically the Srikalahasti style of Kalamkari, where the "kalam" or pen is used for freehand drawing of the subject and filling in the colours, is entirely hand worked. The dyes used in kalamkari are natural. This form of painting flourished in temples centered on creating unique religious identities, and scenes taken from the Hindu epics - Ramayana, Mahabharata etc.

SUN	MON	TUE	WED	THU	FRI	SAT	SUN	MON	TUE	WED	THU	FRI	SAT
						1	2	3	4	5	6	7	8
9	10	11	12	13	14	15	16	17	18	19	20	21	22
23	24	25	26	27	28	29	30	31					



Bal Bharati
PUBLIC SCHOOL
Sector-21, Noida, G.B. Nagar

JANUARY 2022

SUN	MON	TUE	WED	THU	FRI	SAT
						1
2	3	4	5	6	7	8
9	10	11	12	13	14	15
16	17	18	19	20	21	22
23	24	25	26 Republic Day	27	28	29
30	31					



FEBRUARY 2022

GENDER EQUALITY

"I am a woman phenomenally. Phenomenal woman, That's me."



ART FORM - MADHUBANI

Madhubani is a style of Indian painting, practiced in the Mithila and Madhubani regions of Bihar, India. This painting is done with a variety of tools, including fingers, twigs, brushes, nib-pens and by using natural dyes and pigments. It is characterized by its eye-catching geometrical patterns.

SAKSHI YADAV (5 C)

SUN	MON	TUE	WED	THU	FRI	SAT	SUN	MON	TUE	WED	THU	FRI	SAT
									1	2	3	4	5
6	7	8	9	10	11	12	13	14	15	16	17	18	19
20	21	22	23	24	25	26	27	28					

FEBRUARY 2022



Bal Bharati
PUBLIC SCHOOL

Sector-21, Noida, G.B. Nagar

SUN	MON	TUE	WED	THU	FRI	SAT
		1	2	3	4	5
6	7	8	9	10	11	12
13	14	15	16	17	18	19
20	21	22	23	24	25	26
27	28					



PARTNERSHIPS FOR THE GOALS

“Celebrating the human spirit”

ART FORM – SANTHAL

Santhal Paintings are done in primary colours and are enhanced with leafy patterns in the foreground, background and borders. These paintings are characterized by a child like simplicity in the depiction of birds, animals and insects. The figures are static, frequently multicoloured, artistic rather than realistic projections.



SRISHTI KATHAIT (11 D)

MARCH 2022

SUN	MON	TUE	WED	THU	FRI	SAT	SUN	MON	TUE	WED	THU	FRI	SAT
									1	2	3	4	5
6	7	8	9	10	11	12	13	14	15	16	17	18	19
20	21	22	23	24	25	26	27	28	29	30	31		



Bal Bharati
PUBLIC SCHOOL
Sector-21, Noida, G.B. Nagar

MARCH 2022

SUN	MON	TUE	WED	THU	FRI	SAT
		1 Maha Shivaratri	2	3	4	5
6	7	8	9	10	11	12
13	14	15	16	17 Holika Dahan	18 Holi	19
20	21	22	23	24	25	26
27	28	29	30	31		



GOOD HEALTH AND WELL-BEING

"Death, too, wears a mask"



VAANI GUPTA (11 B)

ART FORM – SANTHAL

Santhal Paintings are done in primary colors and are enhanced with leafy patterns in the foreground, background and borders.

These paintings are characterized by a child like simplicity in the depiction of birds, animals and insects. The figures are static, frequently multicolored, artistic rather than realistic projections.

APRIL 2022

SUN	MON	TUE	WED	THU	FRI	SAT	SUN	MON	TUE	WED	THU	FRI	SAT
												1	2
3	4	5	6	7	8	9	10	11	12	13	14	15	16
17	18	19	20	21	22	23	24	25	26	27	28	29	30



Bal Bharati
PUBLIC SCHOOL
Sector-21, Noida, G.B. Nagar

APRIL 2022

SUN	MON	TUE	WED	THU	FRI	SAT
					1	2
3	4	5	6	7	8	9
10 Ram Navmi	11	12	13	14 Mahavir and Ambedkar Jayanti	15 Good Friday	16
17	18	19	20	21	22	23
24	25	26	27	28	29	30



MAY 2022

LIFE ON LAND

"I love to dwell in forest wild , Where giant pine trees pierce the sky;
A beauty spot where Nature smiled, A fitting place to live and die;"



ART FORM – BHIL

Bhil paintings usually consist of large, un-lifelike shapes of everyday characters filled in with earthy, yet bright colours, and then covered with an overlay of uniform dots in several patterns and colours that stand out strikingly against the background. The dots on a Bhil painting are not random. The pigments used for paintings are made from natural materials like leaves and flowers ,neem twigs are used as brushes to create the art.

ADYASHA PRADHAN (8 A)

SUN	MON	TUE	WED	THU	FRI	SAT	SUN	MON	TUE	WED	THU	FRI	SAT
							1	2	3	4	5	6	7
8	9	10	11	12	13	14	15	16	17	18	19	20	21
22	23	24	25	26	27	28	29	30	31				



Bal Bharati
PUBLIC SCHOOL
Sector-21, Noida, G.B. Nagar

MAY 2022

SUN	MON	TUE	WED	THU	FRI	SAT
1	2	3 Eid-UI-Fitr	4	5	6	7
8	9	10	11	12	13	14
15	16 Buddha Purnima	17	18	19	20	21
22	23	24	25	26	27	28
29	30	31				



LIFE BELOW WATER

"It is only in deep waters that a fish knows how strong it is."



ART FORM - MADHUBANI

Madhubani is a style of Indian painting, practiced in the Mithila and Madhubani regions of Bihar, India. This painting is done with a variety of tools, including fingers, twigs, brushes, nib-pens and by using natural dyes and pigments. It is characterized by its eye-catching geometrical patterns.

GAZAL SEHGAL (11 D)

JUNE 2022

SUN	MON	TUE	WED	THU	FRI	SAT	SUN	MON	TUE	WED	THU	FRI	SAT
										1	2	3	4
5	6	7	8	9	10	11	12	13	14	15	16	17	18
19	20	21	22	23	24	25	26	27	28	29	30		



Bal Bharati
PUBLIC SCHOOL
Sector-21, Noida, G.B. Nagar

JUNE 2022

SUN	MON	TUE	WED	THU	FRI	SAT
			1	2	3	4
5	6	7	8	9	10	11
12	13	14	15	16	17	18
19	20	21	22	23	24	25
26	27	28	29	30		



CLIMATE ACTION

"Heaven is under our feet as well as over our heads."

JULY 2022



JIGNASA SRIVASTAVA (8 C)

ART FORM - PHAD

Phad is a religious / folk painting practiced in Rajasthan state of India. This style of painting is traditionally done on a long piece of cloth or canvas, about 30 feet long and five feet wide known as the Phad. The colour palette consists of bright orange, red, yellow, black, blue, green and brown, derived from stones and minerals. Phad depicts the heroic deeds of kings and princes, the daily lives of common men, animals and birds, flora and fauna.

SUN	MON	TUE	WED	THU	FRI	SAT	SUN	MON	TUE	WED	THU	FRI	SAT
					1	2	3	4	5	6	7	8	9
10	11	12	13	14	15	16	17	18	19	20	21	22	23
24	25	26	27	28	29	30	31						



Bal Bharati
PUBLIC SCHOOL
Sector-21, Noida, G.B. Nagar

JULY 2022

SUN	MON	TUE	WED	THU	FRI	SAT
					1	2
3	4	5	6	7	8	9
10 Eid-UI-Zuha	11	12	13	14	15	16
17	18	19	20	21	22	23
24	25	26	27	28	29	30
31						



AFFORDABLE AND CLEAN ENERGY

"Renewables are critical in our fight against Climate Change."



ART FORM - KALIGHAT

Kalighat art form is characterised by bright colours and bold outlines. Kalighat painting evolved as a unique genre of Indian painting in the 19th-Century, in Kolkata, West Bengal. From the depiction of Gods and other mythological characters, these paintings developed over time to reflect a variety of themes.

CHARVI AGARWAL (10 A)

AUGUST 2022

SUN	MON	TUE	WED	THU	FRI	SAT	SUN	MON	TUE	WED	THU	FRI	SAT
								1	2	3	4	5	6
7	8	9	10	11	12	13	14	15	16	17	18	19	20
21	22	23	24	25	26	27	28	29	30	31			



Bal Bharati
PUBLIC SCHOOL
Sector-21, Noida, G.B. Nagar

AUGUST 2022

SUN	MON	TUE	WED	THU	FRI	SAT
	1	2	3	4	5	6
7	8	9 Muharram	10	11 Raksha Bandhan	12	13
14	15 Independence Day	16	17	18 Janmashtami	19	20
21	22	23	24	25	26	27
28	29	30	31			



SEPTEMBER 2022

QUALITY EDUCATION

"To learn to read is to light a fire; Every syllable that is spelled out is a spark."



KHYATI (7 A)

ART FORM - MADHUBANI

Madhubani is a style of Indian painting, practiced in the Mithila and Madhubani regions of Bihar, India. This painting is done with a variety of tools, including fingers, twigs, brushes, nib-pens and by using natural dyes and pigments. It is characterized by its eye-catching geometrical patterns.

SUN	MON	TUE	WED	THU	FRI	SAT	SUN	MON	TUE	WED	THU	FRI	SAT
											1	2	3
4	5	6	7	8	9	10	11	12	13	14	15	16	17
18	19	20	21	22	23	24	25	26	27	28	29	30	

SEPTEMBER 2022



Bal Bharati
PUBLIC SCHOOL
Sector-21, Noida, G.B. Nagar

SUN	MON	TUE	WED	THU	FRI	SAT
				1	2	3
4	5	6	7	8	9	10
11	12	13	14	15	16	17
18	19	20	21	22	23	24
25	26	27	28	29	30	



ZERO HUNGER

"We rise by lifting others."



AATMAN AKSH (3 B)

ART FORM - GOND

Gond painting is a form of painting practiced by one of the largest tribes in India with whom it shares its name. The Gond paintings flourished with vivid colours, especially red, blue, yellow, and white with excellent contrast. These bright paints are usually derived and extracted from organic sources such as coloured soil, charcoal, plant leaves and sap, and even cow dung. These paintings are a reflection of man's close connection with his natural surroundings.

SUN	MON	TUE	WED	THU	FRI	SAT	SUN	MON	TUE	WED	THU	FRI	SAT
						1	2	3	4	5	6	7	8
9	10	11	12	13	14	15	16	17	18	19	20	21	22
23	24	25	26	27	28	29	30	31					

OCTOBER 2022



Bal Bharati
PUBLIC SCHOOL
Sector-21, Noida, G.B. Nagar

OCTOBER 2022

SUN	MON	TUE	WED	THU	FRI	SAT
						1
2 Gandhi Jayanti	3 Ashtami	4 Ram Navmi	5 Dussehra	6	7	8
9 Maharishi Valmiki Jayanti and Milad-Un- Nabi	10	11	12	13 Karva Chauth	14	15
16	17	18	19	20	21	22
23 Choti Diwali	24 Diwali	25 Goverdhan Puja	26 Bhai Dooj	27	28	29
30 Chath Puja	31					



NOVEMBER 2022

CLEAN WATER AND SANITATION

“Drinking brown water, suffocating with air you can chew.”



ART FORM - MADHUBANI

Madhubani is a style of Indian painting, practiced in the Mithila and Madhubani regions of Bihar, India. This painting is done with a variety of tools, including fingers, twigs, brushes, nib-pens and by using natural dyes and pigments. It is characterized by its eye-catching geometrical patterns.

AVANI KANSAL (4 D)

SUN	MON	TUE	WED	THU	FRI	SAT	SUN	MON	TUE	WED	THU	FRI	SAT
									1	2	3	4	5
6	7	8	9	10	11	12	13	14	15	16	17	18	19
20	21	22	23	24	25	26	27	28	29	30			

NOVEMBER 2022



Bal Bharati
PUBLIC SCHOOL

Sector-21, Noida, G.B. Nagar

SUN	MON	TUE	WED	THU	FRI	SAT
		1	2	3	4	5
6	7	8 Guru Nanak Birthday	9	10	11	12
13	14	15	16	17	18	19
20	21	22	23	24	25	26
27	28	29	30			



DECEMBER 2022

REDUCE INEQUALITY

“Share Similarities and Celebrate Differences.”



AAROHI GUPTA (8 A)

ART FORM - PATTACHITRA

Pattachitra is a general term for traditional, cloth-based scroll painting, based in the eastern Indian states of Odisha and West Bengal. It is a painting done on canvas, and is manifested by rich colourful application, creative motifs, designs and portrayal of simple themes, mostly mythological in depiction.

SUN	MON	TUE	WED	THU	FRI	SAT	SUN	MON	TUE	WED	THU	FRI	SAT
											1	2	3
4	5	6	7	8	9	10	11	12	13	14	15	16	17
18	19	20	21	22	23	24	25	26	27	28	29	30	31

DECEMBER 2022



Bal Bharati
PUBLIC SCHOOL
Sector-21, Noida, G.B. Nagar

SUN	MON	TUE	WED	THU	FRI	SAT
				1	2	3
4	5	6	7	8	9	10
11	12	13	14	15	16	17
18	19	20	21	22	23	24
25 Christmas	26	27	28	29	30	31



Bal Bharati
PUBLIC SCHOOL
Sector-21, Noida, G.B. Nagar

Sustainable development is development that meets the needs of the present without compromising the ability of future generations to meet their own needs.

- Gro Harlem Brundtland

