

APRIL-MAY

THE FUNDAMENTAL UNIT OF LIFE

DATE OF ISSUANCE:26-04-18

DATE OF SUBMISSION:03-05-18

1. Fill in the blanks:-

(a) New cells are formed from

(b) Movement of water molecules from their higher concentration to their lower concentration through a semi- permeable membrane is called

(c) The functional components of cell are & nucleus.

(d) Protoplasm has two parts- cytoplasm &

(e) Nucleus, mitochondria & plastids have their own DNA &

(f) The shrinkage or contraction of the contents of the cell away from the cell wall is known as

(g) The process by which Amoeba can engulf a food particle is

(h) is the manufacture of lipids required for making cell membrane.

2. What is the advantage of multicellularity over unicellularity?

3. What are the chromosomes made up of?

4. A cell placed in a solution swells up. What kind of solution is it? Why does it happen?

5. Why are lysosomes known as "suicidal bags"?

6. Why is the nucleus so significant in a cell?

7. Differentiate between plant & animal cells.

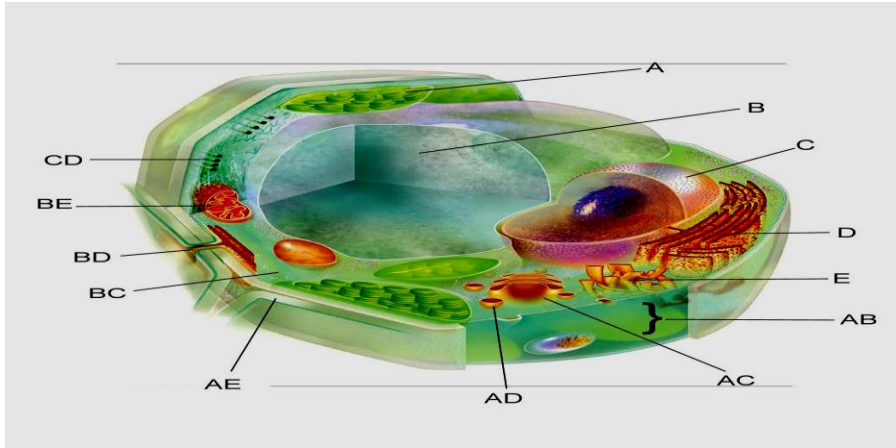
8. Draw neat & labelled diagrams of the following:-(i) Typical plant cell(ii) Typical animal cell (iii) Prokaryotic cell

9. Give the major functions of the following cell organelles-

(a) Endoplasmic reticulum RER & SER (b) Golgi apparatus. (c) Mitochondria. (d) Ribosomes

(e) Golgi Apparatus (f) Lysosomes

Q15 Label the unlabelled parts and give the function of A,B,C, and D



Q16 label the unlabelled parts of the animal cell and give the function of 1,3,12,5 and 11

