



Q8. If  $\alpha$  and  $\beta$  are zeroes of the polynomial  $6x^2 - 5x + K$  such that  $\alpha - \beta = 1/6$ , find the value of  $k$ .

Q9. Find the value of  $p$  for which the equations  $(3p+1)x + 3y - 2 = 0$ ;  
 $(p^2 + 1)x + (p-2)y = 5$  represent parallel lines.

Q10. Find two consecutive even positive integers sum of whose squares is 340.

Q11. Solve by quadratic formula:  $4\sqrt{3}x^2 + 5x - 2\sqrt{3} = 0$

Q12. If  $\sec A = 13/5$ , find the value of  $\frac{2 \sin A - 3 \cos A}{4 \sin A - 9 \cos A}$

### SECTION C

Q13. Find the HCF and LCM of 510 and 92 and hence verify that  $\text{HCF} \times \text{LCM} = \text{Product of two numbers}$ .

Q14. Find all zeroes of the polynomial  $x^4 + 5x^3 - 8x^2 - 10x + 12$  if two of its zeroes are  $\sqrt{2}$  and  $-\sqrt{2}$ .

Q15. Solve for  $x$  and  $y$ :  $x/a + y/b = 2$  ;  $ax - by = a^2 - b^2$

Q16. Solve for  $x$ :  $\frac{x-1}{x-2} + \frac{x-3}{x-4} = \frac{10}{3}$

Q17. Find  $x$  and  $y$  from the given data, if the mean is 50 and the total frequency is 120.

class	0-20	20-40	40-60	60- 80	80 - 100
frequency	17	28	$x$	24	$y$

Q18. The sum of first  $n$  terms of an A.P is  $3n^2 + 4n$ . Find the 25<sup>th</sup> term.

Q19. Evaluate:  $\frac{\sin 25^\circ}{\cos 65^\circ} - \frac{\text{Cosec } 34^\circ}{\sec 56^\circ} - \frac{2\cos 43^\circ \text{ cosec } 47^\circ}{\tan 10^\circ \tan 40^\circ \tan 50^\circ \tan 80^\circ}$

Q20. ABCD is a trapezium in which  $AB \parallel DC$  and its diagonal intersect at O. Show that  $\frac{AO}{BO} = \frac{CO}{DO}$

Q21. O is any point inside a rectangle ABCD. Prove that  $OB^2 + OD^2 = OA^2 + OC^2$

Q22. Find the mode from the given data.

Daily Expenditure on milk(inRs.)	0-30	30-60	60-90	90-120	120-150
No.of households	6	6	9	6	5

#### SECTION D

Q23. Find the A.P whose third term is 16 and the 7<sup>th</sup> term exceeds the 5<sup>th</sup> term by 12. Also, find the sum of its 20 terms.

Q24. Prove that ,  $\frac{\cos A - \sin A + 1}{\cos A + \sin A - 1} = \operatorname{cosec} A + \cot A$

Q25. An express train takes 3 hour less than a passenger train for a journey of 600km. If the speed of the passenger train 10km/hr less than the express train, find the speeds of both the trains.

Q26. Draw a less than type ogive from the given data and hence find the median.

Age	10-20	20-30	30-40	40-50	50-60	60-70
No. of patients	2	8	15	12	10	5

Q27. Prove that the areas of two similar triangles is equal to the squares of the ratio of their corresponding sides.

Q28. A lending library has a fixed charge for the first three days and an additional charge for each day thereafter. Saritha paid Rs. 27 for a book kept for seven days, while Susy paid Rs.21 for the book she kept for five days. Find the fixed charge and the charge for each extra day.

Q29. A 2m tall boy is standing at some distance from a 29m tall building. The angle of elevation from his eyes of the top of the building increases from  $30^\circ$  to  $60^\circ$  as he walked towards the building. Find the distance he walked towards the building.

Q30. Find four consecutive terms in A.P whose sum is 20 and the sum of whose squares is 120.





**MID TERM EXAM ( 2018 - 19 )**  
**SUBJECT - MATHEMATICS**  
**CLASS - X**  
**SET - B**

**Time allowed -3 Hours**

**Max. Marks - 80**

**Date: 12 / 09/2018**

**Prepared by S.Renakumar**

**General Instructions:**

- (i) All questions are compulsory.
- (ii) The question paper consists of 30 questions divided into four sections A, B, C and D.
- (iii) Section A contains 6 questions of 1 mark each. Section B contains 6 questions of 2 marks each. Section C contains 10 questions of 3 marks each. Section D contains 8 questions of 4 marks each.

**SECTION A**

- Q1. Find the value of  $k$  for which the quadratic equation  $2x^2 + 5x + k = 0$  has real roots.
- Q2. If one zero of the polynomial  $2x^2 - 3x + k$  is reciprocal to the other, then find the value of  $k$ .
- Q3. Find the median of the data, using an empirical relation when mode = 14.4 and mean = 10.5.
- Q4. If  $\tan A = 1/\sqrt{3}$ , find the value of  $\cos (90^\circ - A)$
- Q5. Find the angle of elevation of the sun when the length of the shadow of a  $16\sqrt{3}$  m high pole is 48m?
- Q6. Find the value of  $k$  if  $k-1$ ,  $k+3$  and  $3k-1$  are three consecutive terms of an A.P.

**SECTION B**

- Q7. Explain why  $17 \times 11 \times 2 + 17 \times 11 \times 5$  is a composite number.

Q8. If  $\alpha$  and  $\beta$  are zeroes of the polynomial  $x^2 - 7x + K$  such that  $\alpha - \beta = 1$ , find the value of  $k$ .

Q9. Find the value of  $p$  for which the equations  $(3p+1)x + 3y - 2 = 0$ ;  
 $(p^2 + 1)x + (p-2)y = 5$  represent parallel lines.

Q10. Find two consecutive odd positive integers sum of whose squares is 290.

Q11. Solve by quadratic formula:  $4\sqrt{3}x^2 + 5x - 2\sqrt{3} = 0$ .

Q12. If  $4\sec A = 5$ , find the value of  $\frac{\sin A - 2 \cos A}{\tan A - \cot A}$

### SECTION C

Q13. Find the HCF and LCM of 510 and 92 and hence verify that  $\text{HCF} \times \text{LCM} = \text{Product of two numbers..}$

Q14. Find all zeroes of the polynomial  $x^4 + x^3 - 34x^2 - 4x + 120$  if two of its zeroes are 2 and -2.

Q15. Solve for  $x$  and  $y$ :  $49x + 51y = 499$  ;  $51x + 49y = 501$

Q16. Solve for  $x$ :  $\frac{x-1}{x-2} + \frac{x-3}{x-4} = \frac{10}{3}$

Q17. Find  $x$  and  $y$  from the given data, if the mean is 14.7 and the total frequency is 40.

class	0- 6	6-12	12-18	18- 24	24 - 30	30 -36	36-42
frequency	10	$x$	4	7	$y$	4	1

Q18.  $O$  is any point inside a rectangle  $ABCD$ . Prove that  $OB^2 + OD^2 = OA^2 + OC^2$

Q19. Evaluate:  $\frac{\sin 35^\circ}{\cos 55^\circ} - \frac{\text{Cosec } 44^\circ}{\sec 46^\circ} - \frac{2\cos 43^\circ \text{ cosec } 47^\circ}{\tan 10^\circ \tan 40^\circ \tan 50^\circ \tan 80^\circ}$

Q20. Diagonals of a quadrilateral  $ABCD$  intersect at  $O$  such that  $\frac{AO}{BO} = \frac{CO}{DO}$   
 Prove that  $ABCD$  is a trapezium.

Q21. The sum of first  $n$  terms of an A.P is  $4n - n^2$ . Find the 25<sup>th</sup> term.

Q22. Find the mode from the given data.

Daily Expenditure on milk(Rs.)	0-30	30-60	60-90	90-120	120-150
No.of households	5	6	9	6	4

#### SECTION D

Q23. Find the sum of first 20 terms of an A.P, in which 3<sup>rd</sup> term is 7 and 7<sup>th</sup> term is two more than thrice of its 3<sup>rd</sup> term..

Q24. Prove that ,  $\frac{\sin A - \cos A + 1}{\sin A + \cos A - 1} = \frac{1}{\sec A - \tan A}$

Q25. An express train takes 3 hour less than a passenger train for a journey of 600km. If the speed of the passenger train 10km/hr less than the express train, find the speeds of both the trains.

Q26. Draw a less than type ogive from the given data and hence find the median.

Age	20-30	30-40	40-50	50-60	60-70	70-80
No.of patients	2	8	15	12	10	5

Q27. Find four consecutive terms in A.P whose sum is 20 and the sum of whose squares is 120.

Q28. The area of a rectangle gets reduced by 9 sq. units, if its length is reduced by 5 units and breadth is increased by 3 units. If we increase length by 3 units and breadth by 2 units, the area increases by 67 sq. units. Find the dimensions of the rectangle.

Q29. As observed from the top of a 75 m high lighthouse, the angles of depression of two ships are 30° and 45°. If one ship is exactly behind the other on the same side of the lighthouse, find the distance between the two ships.

Q30. Prove that, In a triangle if square of one side is equal to the sum of squares of the other two sides, then the angle opposite the first side is a right angle..





# Bal Bharati PUBLIC SCHOOL

Address : Sector - 21, Noida  
Phone : 0120-2534064, 2538533 / E-mail : bbpsnd@yahoo.co.in  
Website : <http://bbpsnoida.balbharti.org> Affiliation No: 2130422

## MID TERM EXAMINATION(2018-19) SUBJECT : SCIENCE & TECHNOLOGY CLASS - X (SET A)

Time : 3 Hrs.  
Exam Date : 20.09.18

M. Marks: 80  
Prepared by : T.Khurana,  
I.Mishra, V.Oberoi

### General Instructions:

- The question paper comprises two sections, A and B. You are to attempt both the sections.
- All questions are compulsory.
- All questions of Section A and Section B are to be attempted separately.
- Question No 1 and 2 in Section A are one mark questions. They are to be answered in one word or in one sentence.
- Question No 3 to 5 in Section A are two mark questions. They are to be answered in about 30 words each.
- Question No 6 to 15 in Section A are three mark questions. They are to be answered in about 50 words each.
- Question No 16 to 21 in Section A are five mark questions. They are to be answered in about 70 words each.
- Question No 22 to 27 in Section B are based on practical skills. Each question is a two marks question. These are to be answered in brief.

### SECTION - A

- Q.1 State the advantages of segregation of waste before dispersal. 1
- Q.2 Why are coils of electric toasters and electric irons made of an alloy rather than pure metal? 1
- Q.3 List the characteristics of a good fuel. 2
- Q.4 Name one antacid. How does it help to remove indigestion from stomach? 2
- Q.5 What is a synapse? Why do the signals in a synapse flow from axon of one neuron to dendrite of another neuron but not the reverse? 2
- Q.6 (a) What is the principle of the electric generator? 3
- (b) Name and state the rule used to determine the direction of the induced current in the armature.
- (c) Give any two factors on which the magnitude of the induced current depends.
- Q.7. Two bulbs A and B are rated 100 W – 120 V and 10 W – 120 V respectively. They are connected across a 120 V source in series. Which bulb will consume more energy? 3
- Q.8 How would you differentiate between- 3

- a) Walking and Reflex action
- b) Aerobic and Anaerobic respiration

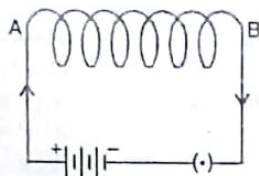
Q. 9 a) What will happen if we kill all organisms of a trophic level?

3

b) Write a short note on vegetative propagation. Why is it practiced for growing some types of plants?

Q.10 Observe the fig. given below and answer the following questions:

3



(a) Write the special name given to the coil AB which has many circular turns of insulated copper wire.

(b) List two factors on which the strength of the magnetic field produced by AB depends.

(c) What is the effect of placing an iron core in the coil AB?

Q.11 Draw labeled diagram to show human brain. List three parts of hind brain. Which part is responsible for maintaining posture and balance of the body?

3

Q.12 Give reason Why?

3

- a) Adrenal glands are called as glands of emergency.
- b) DNA copying is an essential part of the process of reproduction.
- c) Diaphragm is essential in human body.

Q.13 What is meant by pH of a solution ? How is the concentration of hydronium ions ( $\text{H}_3\text{O}^+$ ) affected when a solution of an acid is diluted ? Name one important precaution you would take while diluting an acid .

3

Q.14 a) You are given three samples of acids A,B,C which have pH values equal to 2, 6, 5 respectively . Arrange these in increasing order of acidic strength .

b) Why is sodium kept immersed in kerosene ?

c) Name two metals which evolve hydrogen gas with very dilute nitric acid .

3.

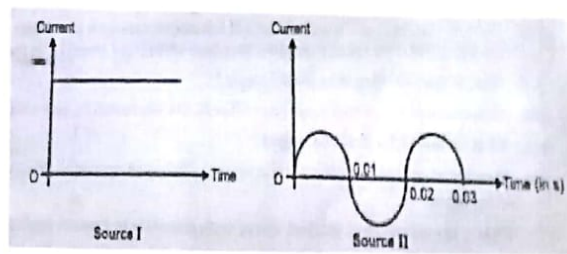
Q.15 What are amphoteric oxides ? Name two amphoteric oxides . Write chemical equations to show their amphoteric nature .

3

Q.16 You are given the following current – time graphs from two different sources.

5



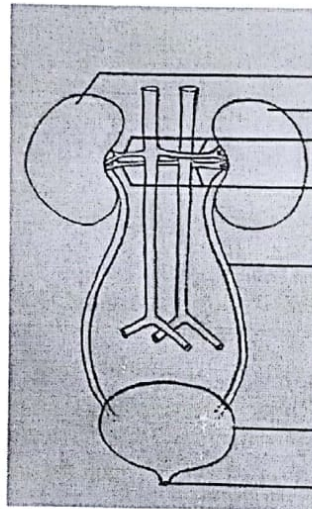


- Name the type of current in the two cases.
- Identify any one source for each type of these currents.
- What is the frequency of current in case II in India?
- Use the above graphs to write two differences between the currents in the two cases.

Q.17 Draw and label the given diagram and answer the questions:

- State two functions of human kidneys.
- What is the structural and functional unit of kidneys?
- How can we usually control the urge to urinate?

5



Q.18 Draw and Label the given diagram and explain the process of Double circulation in humans with the help of arrows and flow chart. Also name the instrument used to measure Blood pressure. 5



Q.19 (a) In a house hold electric circuit, different appliances are connected in parallel. Give two reasons for the same.

(b) An electrician puts a fuse of rating 5A in that part of the domestic circuit in which an electrical heater of rating 1.5 kW, 220 V is operating. What is likely to happen in this case and why? What change, if any, needs to be made? 5

Q.20 a) How do acids react with metal carbonates ? Explain with the help of a chemical equation

b) Write one chemical equation of a precipitation reaction .

c) Why is respiration considered an exothermic reaction ?

d) Write chemical equation for decomposition of lead nitrate.

e) What happens when aqueous solutions of barium chloride and sodium sulphate are mixed ? Write chemical equation for this reaction . 5

Q.21 a) Give the chemical name and formula of bleaching powder .Write the reaction for its production.

b) What are the main products formed during electrolysis of Brine ? Write the chemical equation for the reaction that takes place during the process.

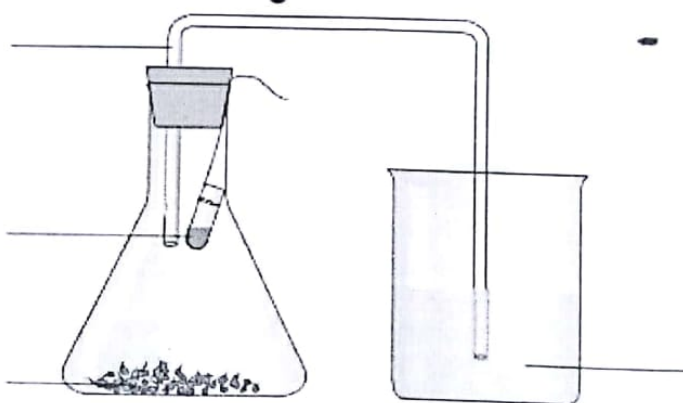
c) Which compound would you use to remove permanent hardness of water? 5

### SECTION – B

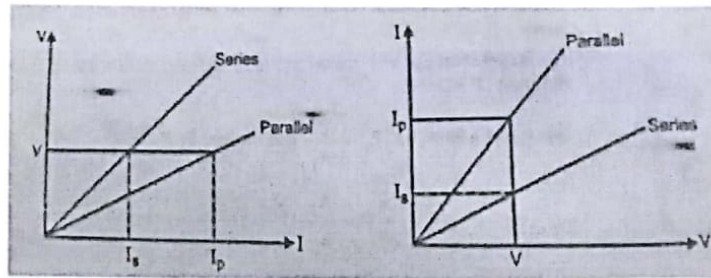
Q.22 Identify the given experimental set up. 2

a) Write aim and label all parts.

b) What will be your observation?



Q.23 Two students perform experiments on series and parallel combinations of two given resistors  $R_1$  and  $R_2$  and plot the  $V - I$  graphs. Which of the graphs is (are) correctly labelled in terms of the words 'series' and 'parallel'? Justify your answer. 2



Q.24 (a) What are the precautions to be taken during the experimental verification of Ohm's law? 2

(b) The range of the ammeter used for the experiment is 3 A and there are 20 divisions in the range of 1 A. If the needle points at the sixteenth division, what is the value of the current?

Q.25 To show that zinc is more reactive than copper, what procedure would you adopt in the laboratory? Explain your observations. 2

Q.26 Name the type of reproduction by which Amoeba reproduces? Draw labeled diagram to show the process. What do you call the cells formed after reproduction? 2

Q.27 A blue litmus paper was first dipped in dilute HCl and then in dilute NaOH solution.

Explain the observation of the above experiment. 2





# Bal Bharati PUBLIC SCHOOL

Address : Sector - 21, Noida  
Phone : 0120-2534064, 2538533 / E-mail : bbpsnd@yahoo.co.in  
Website : <http://bbpsnoida.balbharati.org> Affiliation No: 2130422

## MID TERM EXAMINATION(2018-19) SUBJECT : SCIENCE & TECHNOLOGY CLASS - X (SET B)

Time : 3 Hrs.

Exam Date : 20.09.18

M. Marks: 80

Prepared by : T.Khurana,  
I.Mishra, V.Oberoi

### General Instructions:

- i) The question paper comprises two sections, A and B. You are to attempt both the sections.
- ii) All questions are compulsory.
- iii) All questions of Section A and Section B are to be attempted separately.
- iv) Question No 1 and 2 in Section A are one mark questions. They are to be answered in one word or in one sentence.
- v) Question No 3 to 5 in Section A are two mark questions. They are to be answered in about 30 words each.
- vi) Question No 6 to 15 in Section A are three mark questions. They are to be answered in about 50 words each.
- vii) Question No 16 to 21 in Section A are five mark questions. They are to be answered in about 70 words each.
- viii) Question No 22 to 27 in Section B are based on practical skills. Each question is a two marks question. These are to be answered in brief.

### - SECTION - A

Q.1 State the advantages of cloth bags over plastic bags during shopping. 1

Q.2 Why does the 'cord' of an electric heater not glow while the heating 'element' does? 1

Q.3 List the disadvantages of using 'fossil' fuels. 2

Q.4 Name the acid present in bee sting. How can the pain due to bee sting be removed? 2

Q.5 What is a synapse? Why do the signals in a synapse flow from axon of one neuron to dendrite of another neuron but not the reverse? 2

Q.6 (a) What is the principle of the electric motor? 3

(b) Name and state the rule used to determine the direction of the force/motion of the rectangular coil.

(c) Give any two factors on which the speed of rotation of the motor depends.

Q.7 Two lamps rated 60 W at 220 V and 40 W at 220 V, are connected in parallel to the electric supply at 220 V.

(a) Draw a circuit diagram to show the connections.

(b) Calculate the current drawn from the electric supply.

(c) Calculate the resultant resistance of the circuit. 3

Q.8 How would you differentiate between-

a) Reflex action and Walking

b) Aerobic and Anaerobic respiration

3

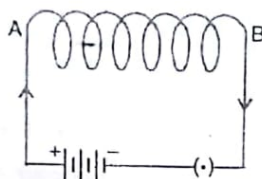
Q. 9 a) What will happen if we kill all organisms of a trophic level?

b) Write a short note on Spore formation. How will an organism be benefited if it reproduces through spores?

3

Q.10 Observe the fig. given below and answer the following questions:

3



(a) Write the special name given to the coil AB which has many circular turns of insulated copper wire.

(b) List two factors on which the strength of the magnetic field produced by AB depends.

(c) What is the effect of placing an iron core in the coil AB?

Q.11 Draw labeled diagram to show human brain. List three parts of hind brain. Which part controls rate of heart beat, swallowing, coughing, sneezing and vomiting?

3

Q.12 Give reason Why?

3

a) Adrenal glands are called as glands of emergency.

b) DNA copying is an essential part of the process of reproduction.

c) Clotting of blood is essential at the points of injury.

Q.13 What precautions would you take while diluting an acid and why ? How is the concentration of hydronium ions ( $\text{H}_3\text{O}^+$ ) affected when a solution of an acid is diluted?

3

Q.14 a) You are given three samples of bases A,B,C which have pH values equal to 9,10,8 respectively . Arrange these in increasing order of basic strength.

b) Why is potassium kept immersed in kerosene ?

c) Why metals do not evolve hydrogen gas when they react with concentrated nitric acid?

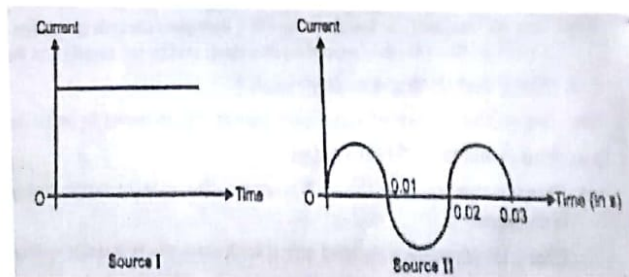
3

Q.15 What are amphoteric oxides ? Name two amphoteric oxides . Write chemical equations to show their amphoteric nature .

3

Q.16 You are given the following current – time graphs from two different sources.

5

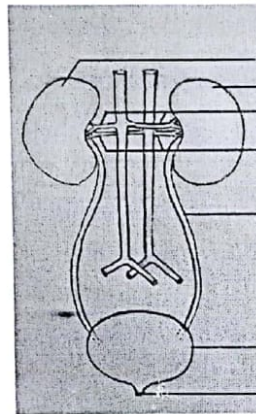


- Name the type of current in the two cases.
- Identify any one source for each type of these currents.
- What is the frequency of current in case II in India?
- Use the above graphs to write two differences between the currents in the two cases.

Q.17 Draw and label the given diagram and answer the questions:

5

- State two functions of human kidneys.
- What is the structural and functional unit of kidneys?
- How can we usually control the urge to urinate?



Q.18 Draw and Label the given diagram and explain the process of Double circulation in humans with the help of arrows and flow chart. Also name the instrument used to measure Blood pressure.

5





Q.19 (a) How can 'overloading' be avoided in a domestic circuit?

5

(b) List two properties of an electric 'fuse'.

(b) An electric oven of a 2 kW power rating is operated in a domestic circuit at 220 V. The circuit has a current rating of 5 A. What result do you expect? Explain.

Q.20 a) How do acids react with metal bicarbonates ? Explain with the help of a chemical equation

b) Write one chemical equation of a precipitation reaction .

c) Why is respiration considered an exothermic reaction ?

d) Write chemical equation for decomposition of Ferrous sulphate.

e) What happens when aqueous solutions of barium chloride and sodium sulphate are mixed ? Write chemical equation for this reaction .

5

Q.21 a) Give the chemical name and formula of bleaching powder . Write the reaction for its production.

b) What are the main products formed during the electrolysis of Brine ? Write the chemical equation for the reaction that takes place during the process.

c) Which compound would you use to remove permanent hardness of water?

5

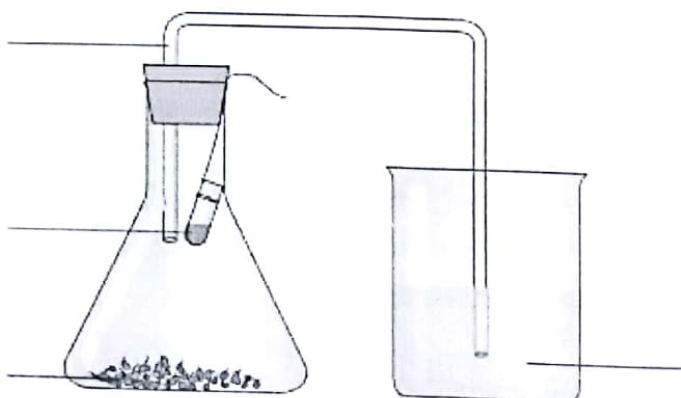
### SECTION – B

Q.22 Identify the given experimental set up.

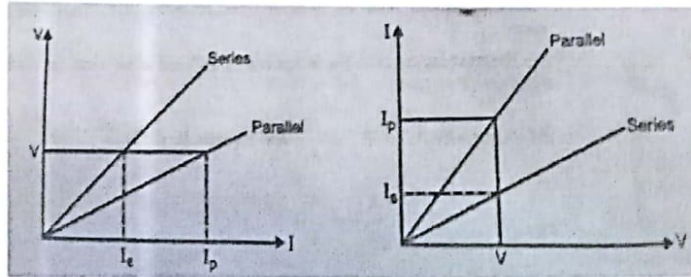
a) Write aim and label all parts.

b) What have you taken in small tube and why?

2



Q.23 Two students perform experiments on series and parallel combinations of two given resistors  $R_1$  and  $R_2$  and plot the  $V - I$  graphs. Which of the graphs is (are) correctly labelled in terms of the words 'series' and 'parallel'? Justify your answer. 2



Q.24 (a) What are the precautions to be taken during the experimental verification of Ohm's law? 2

(b) The range of the ammeter used for the experiment is 3 A and there are 20 divisions in the range of 1A .If the needle points at the sixteenth division, what is the value of the current?

Q.25 To show that iron is more reactive than copper, what procedure would you adopt in the laboratory ? Explain your observations . 2

Q.26 Name the type of reproduction by which Yeast reproduces? Draw labeled diagram to show the process. What do you call the cells formed after reproduction and fail to detach? 2

Q.27 A red litmus paper was first dipped in dilute NaOH solution and then in dilute HCl solution .Explain the observation of the above experiment. 2



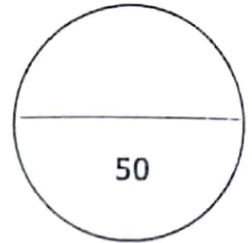
# Bal Bharati PUBLIC SCHOOL

Sector - 21, Noida  
Phone : 0120-2534064, 2538533 / E-mail : bbpsnd@yahoo.co.in  
Website : http://bbpsnoida.balbhharati.org

**MIDTERM EXAM (2018-19)**

**SUBJECT: FINANCIAL MARKET MANAGEMENT**

**CLASS – X (SET A)**



Time : 2 hours

Exam Date : 06.09.18

Name : \_\_\_\_\_

Class & Sec: \_\_\_\_\_

Roll No: \_\_\_\_\_

M. Marks: 50

Prepared by: M. Gulati

## General Instructions

- The question paper has 4 Sections
- Section A has 8 questions of 1 mark each
- Section B has 10 questions of 2 marks each
- Section C has 3 questions of 4 marks each
- Section D has 2 questions of 5 marks each
- Answer neatly in the space provided.
- **USE OF UNFAIR MEANS DURING EXAMS IS STRICTLY PROHIBITED. A CANDIDATE FOUND GUILTY OF USING ANY OF THE UNFAIR MEANS WILL BE DISQUALIFIED AND DEBARRED FROM APPEARING FOR ANY OF THE EXAMINATIONS FOR ONE YEAR.**

## **SECTION A**

I Encircle the correct answer :- (1x8 = 8 marks)

- a) Demutualisation of stock exchange refers to the segregation of the following
- i) Ownership and management      ii) Management and trading      iii) Ownership and trading      iv) Ownership, management and trading
- b) Price at which company offers shares initially in the Primary market is known as
- i) Issue Price      ii) Cut off Price      iii) Price Band      iv) Floor Price
- c) A combination of different investment assets mixed and matched for the purpose of achieving an investor's goal.
- i) Derivative      ii) Portfolio      iii) Ask Price      iv) Bid Price
- d) Financial derivative market may have underlying asset as
- i) Cash      ii) Gold      iii) Shares      iv) None of them



e) A unique identification number for a security is known as

- i) IUN      ii) IDIN      iii) ISIN      iv) IDS

f) Process by which electronic certificates of an investor are converted to a physical form

- i) Rematerialisation      ii) Materialization      iii) Dematerialization      iv) Book building

g) Companies Act of India was established in the year \_\_\_\_\_

- i) 1935      ii) 1948      iii) 1956      iv) 1965

## SECTION B

II Give one line answers for the following:-

(2 x 10 = 20 marks)

a) What is meant by NEAT?

---

---

b) What are the beginning three letters with which Indian Broker and Indian Subbroker's are registered?

---

---

c) What is Diversification of Portfolio ?

---

---

d) What is an Option Premium?

---

---

e) Besides safeguarding securities, a custodian also keeps track of corporate actions for clients. Explain any two of them?

---

---

f) Write the full form of the following:-

FCRA \_\_\_\_\_

RRF \_\_\_\_\_

g) Who are the participants in the securities market? Name any two.

---

---

h) What does the term Premium mean in securities market?

---

---

i) Why does securities market need regulators?

---

---

j) What is a Cap Price?

---

---

III Answer the following questions briefly:-

(3 x 4 = 12 marks)

a) Explain the three features of a debt instrument.

---

---

---

---

---

b) Explain Forwards, Futures and Warrants as a derivatives.

---

---

---

---

---

c) State any three benefits of participation of depository regarding transfer of securities.

---

---

---

---

---

b) What are the similarities between a Depository and Bank.? Who are the Depositories of India?

---

---

---

---

---

---

---

---

---



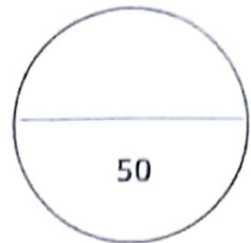


# Bal Bharati PUBLIC SCHOOL

Sector - 21, Noida  
Phone : 0120-2534064, 2538533 / E-mail : bbpsand@yaho.co.in  
Website : <http://b.bpsrda.balbhharati.org>

**MIDTERM EXAM (2018-19)**

**SUBJECT: FINANCIAL MARKET MANAGEMENT  
CLASS - X (SET B)**



Time : 2 hours

Exam Date : 06.09.18

Name : \_\_\_\_\_

Class & Sec: \_\_\_\_\_

Roll No: \_\_\_\_\_

M. Marks: 50

Prepared by: M. Gulati

## General Instructions

- The question paper has 4 Sections
- Section A has 8 questions of 1 mark each
- Section B has 10 questions of 2 marks each
- Section C has 3 questions of 4 marks each
- Section D has 2 questions of 5 marks each
- Answer neatly in the space provided.
- **USE OF UNFAIR MEANS DURING EXAMS IS STRICTLY PROHIBITED. A CANDIDATE FOUND GUILTY OF USING ANY OF THE UNFAIR MEANS WILL BE DISQUALIFIED AND DEBARRED FROM APPEARING FOR ANY OF THE EXAMINATIONS FOR ONE YEAR.**

## SECTION A

I Encircle the correct answer :-

(1x8 = 8 marks)

- a) A combination of different investment assets mixed and matched for the purpose of achieving an investor's goal.
- i) Derivative                      ii) Portfolio                      iii) Ask Price                      iv) Bid Price
- b) Price at which company offers shares initially in the Primary market is known as
- i) Issue Price                      ii) Cut off Price                      iii) Price Band                      iv) Floor Price
- c) Demutualisation of stock exchange refers to the segregation of the following
- i) Ownership and management                      ii) Management and trading                      iii) Ownership and trading                      iv) Ownership, management and trading
- d) Companies Act of India was established in the year \_\_\_\_\_
- i) 1935                      ii) 1948                      iii) 1956                      iv) 1965

e) A unique identification number for a security is known as

- i) IUN      ii) IDIN      iii) ISIN      iv) IDS

f) Process by which electronic certificates of an investor are converted to a physical form

- i) Rematerialisation      ii) Materialization      iii) Dematerialization      iv) Book building

g) Financial derivative market may have underlying asset as

- i) Cash      ii) Gold      iii) Shares      iv) None of them

## SECTION B

II Give one line answers for the following:-

(2 x 10 = 20 marks)

a) Why does securities market need regulators?

---

---

b) What is a Cap Price?

---

---

c) What does the term Discount mean in securities market?

---

---

d) What is Diversification of Portfolio ?

---

---

e) What is an Option Premium?

---

---

f) Besides safeguarding securities, a custodian also keeps track of corporate actions for clients. Explain any two of them?

---

---

g) Write the full form of the following:-

FCRA \_\_\_\_\_

DRF \_\_\_\_\_

h) What is meant by NEAT?

---

---

i) What are the beginning three letters with which Indian Broker and Indian Subbroker's are registered?

---

---

j) Who are the participants in the securities market? Name any two.

---

---

III Answer the following questions briefly:-

(3 x 4 = 12 marks)

a) Explain the following:-

i) Rights Issue of shares

---

---

ii) Treasury bills

---

---

iii) Bonus Issue of shares

---

---

b) Explain Forwards, Futures and Warrants as a derivatives.

---

---

---

---

---



c) State any three benefits of participation of depository regarding transfer of securities.

---

---

---

---

---

d) Explain the three features of a debt instrument.

---

---

---

---

---

#### SECTION D

IV Answer the following questions in detail:-

(2 x 5 = 10 marks)

a) Differentiate between the following :-

i) Calls and Put options

---

---

---

---

---

ii) Commodity and Financial Derivatives

---

---

---

---

b) What are the similarities between a Depository and Bank.? Who are the Depositories of India?

---

---

---

---

---

---

---

---

---

---